

图

版

図版 1



(1) 古墳遠望 (西側より)

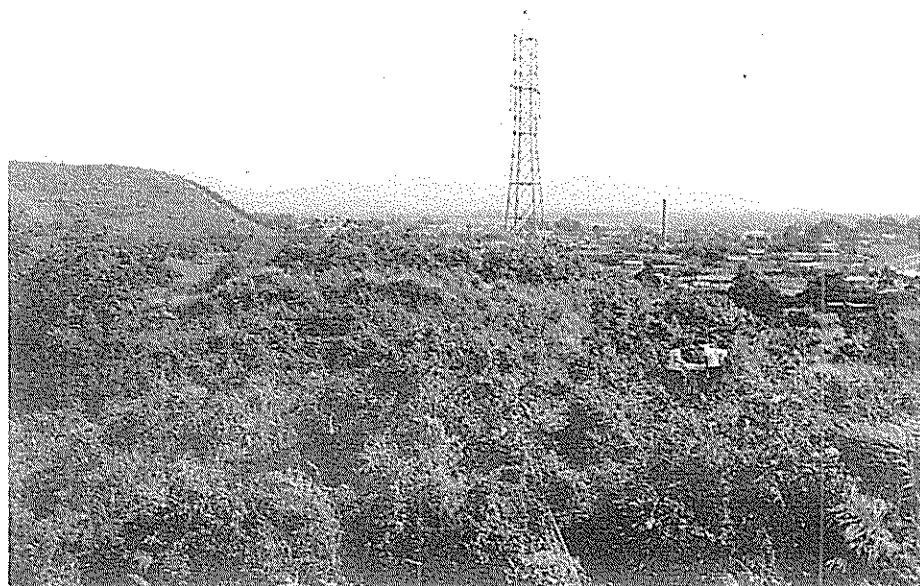


(2) 同上 (前方部は消滅)

図版 2



(1) 古墳近影 (西北側より)



(2) 同上 (北側より)

図版 3

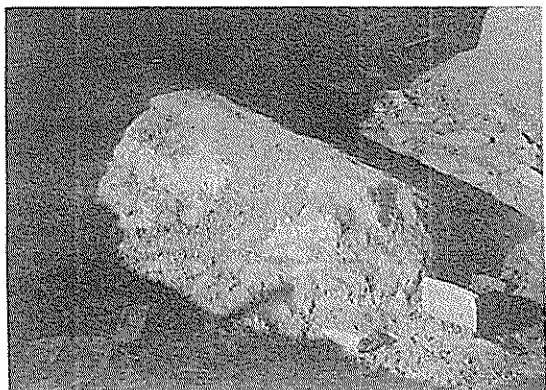


(1) 竪穴式石室 (墓壙と粘土被覆)

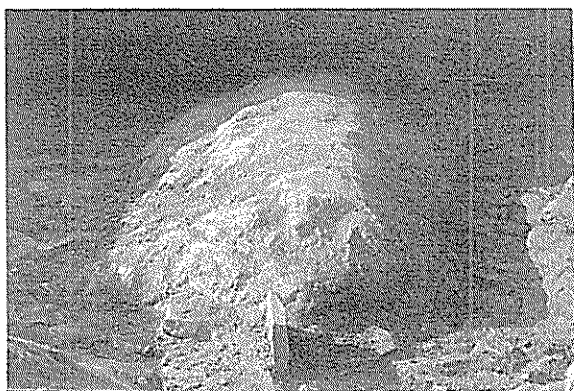


(2) 同上 (石室蓋石)

図版 4



(1) 粘土被覆南端の立石 (南西側より)



(2) 同上 (南側より)



(3) 墓壙北東隅の階段状遺構



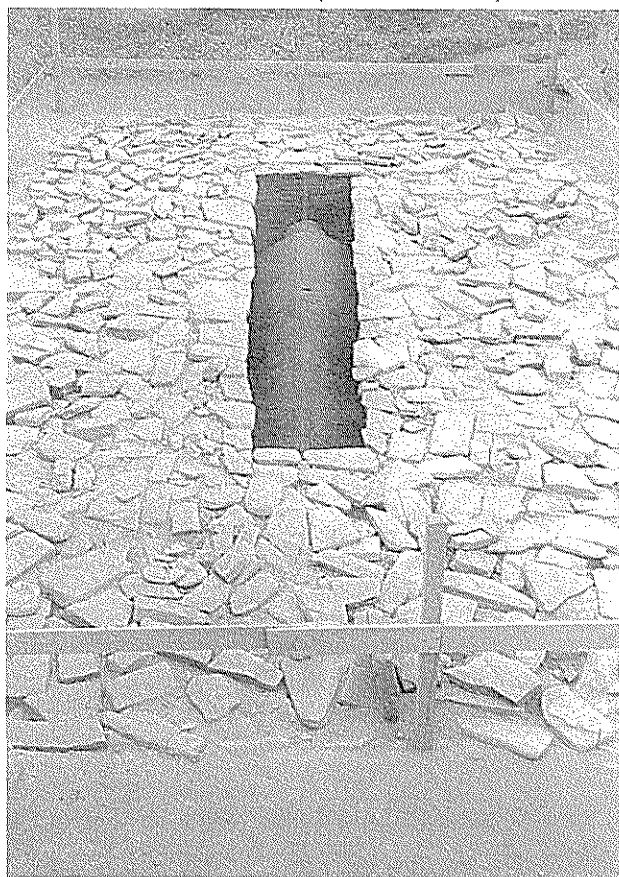
(1) 階段状遺構 (南側より)



(2) 同上 (西側より)

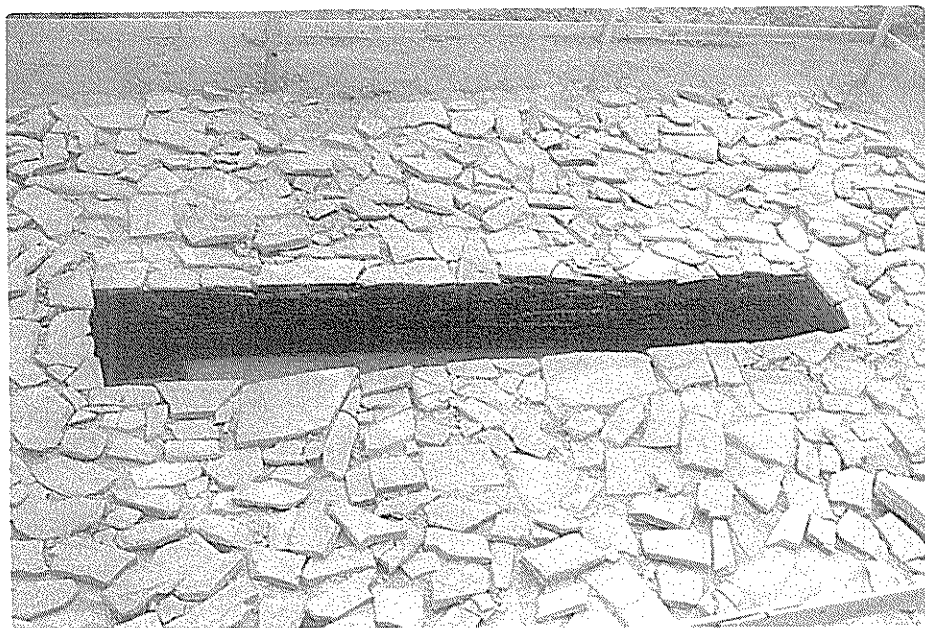


(1) 豎穴式石室 (石室蓋石除去)



(2) 同上

図版 7



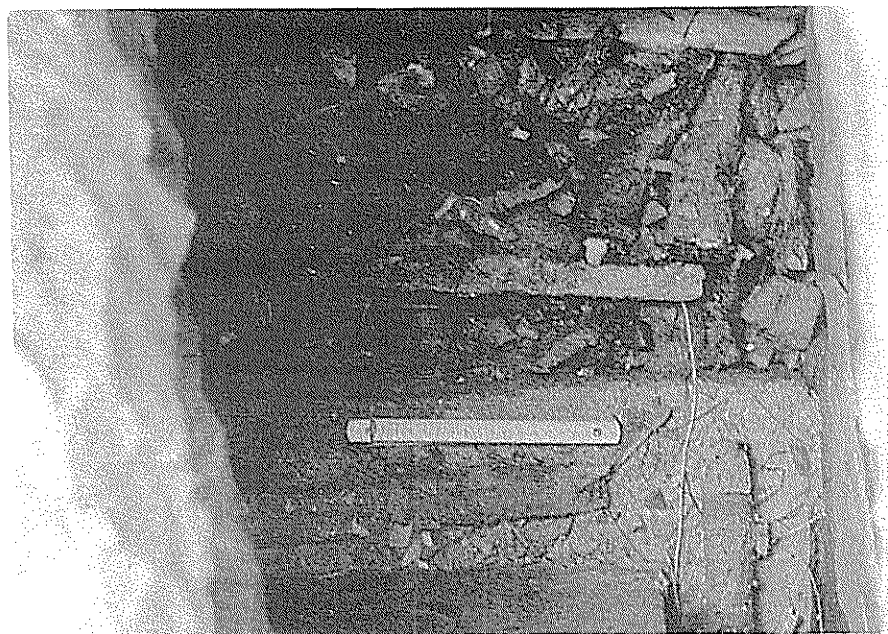
(1) 竪穴式石室 (西側より)



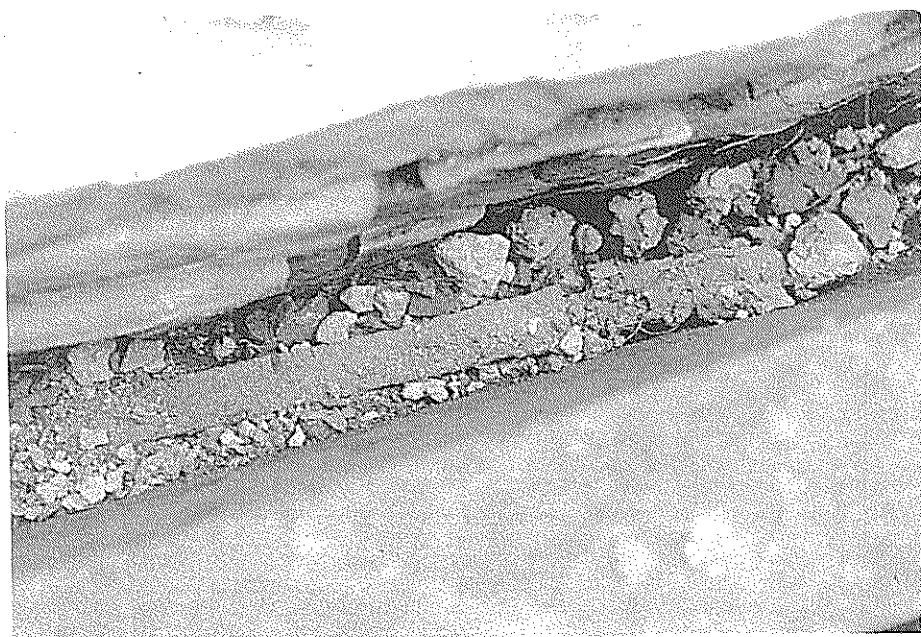
(2) 棺外遺物出土状態 (北側)



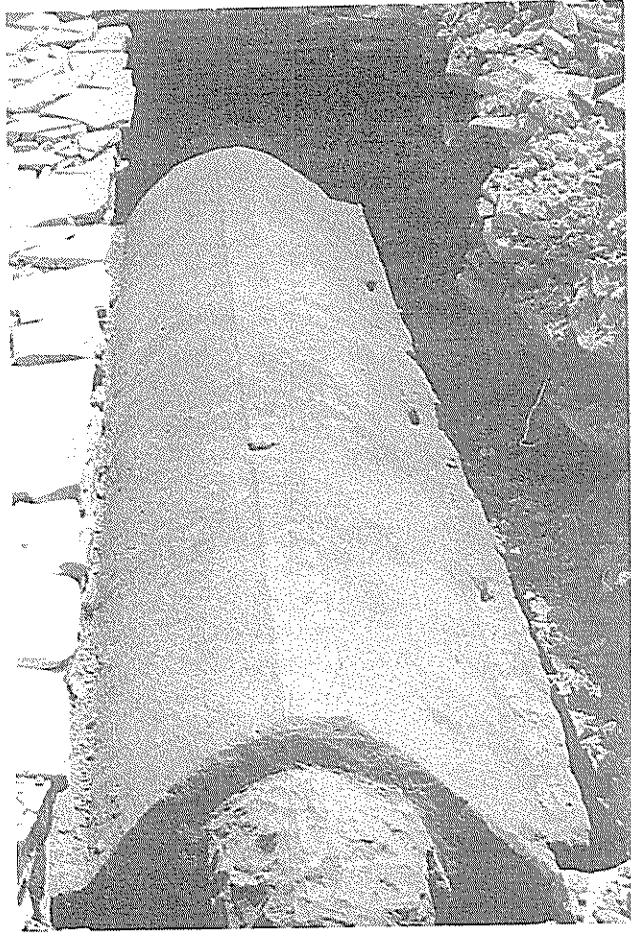
図版 8



(1) 棺外遺物出土状態 (北東側)



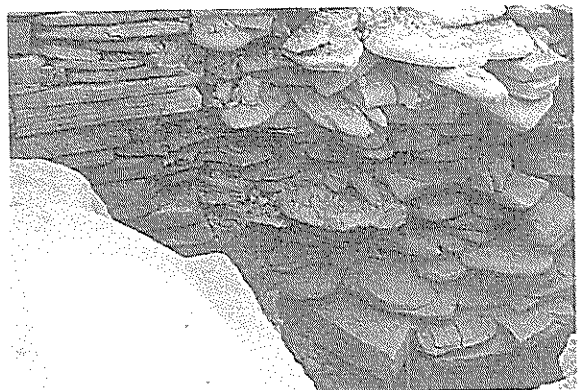
(2) 同上 (西側、刀4)



(1) 石棺蓋石出土状態



(2) 石棺蓋石の矩形小孔

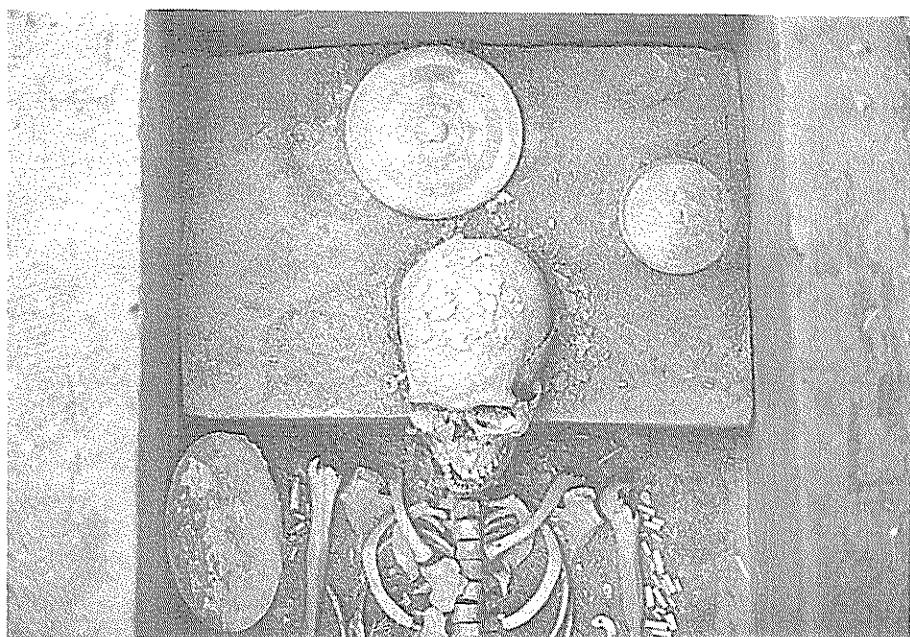


(3) 石室控積状態 (南西隅)

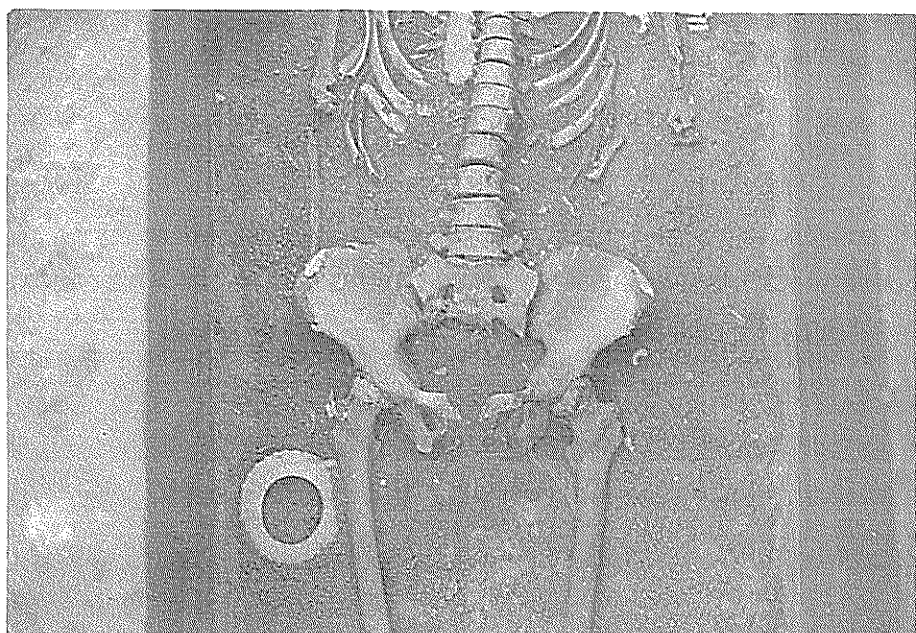
(1) 棺内遺物出土状態 (南側より)



(2) 同上 (北側より)



(1) 棺内 遺物出土状態 (頭部付近)



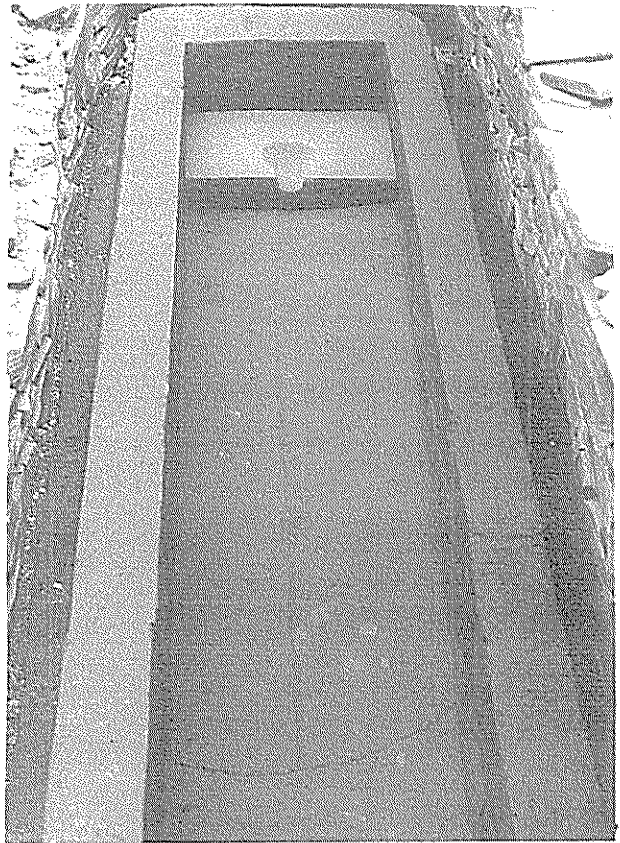
(2) 同上 (腰部付近)

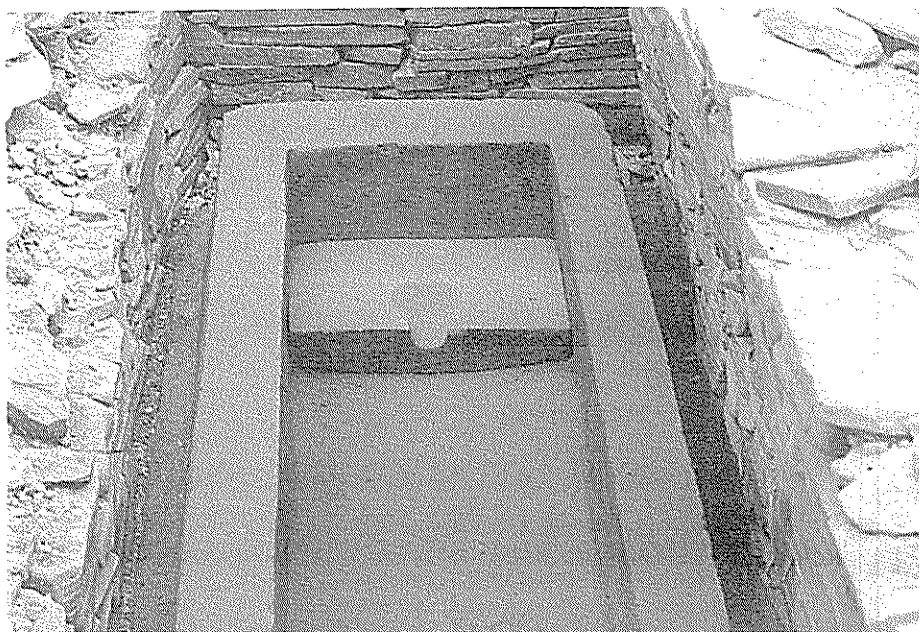
図版 12

(1) 棺内遺物出土状態 (南端)

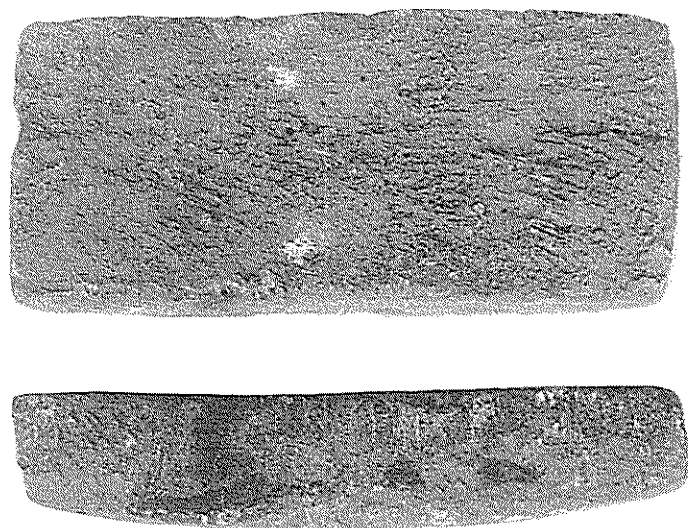


(2) 棺内遺物除去後

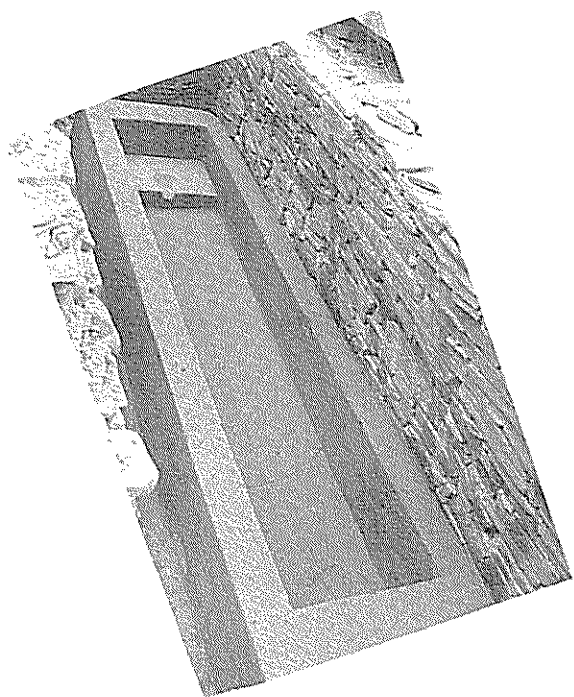




(1) 石棺内の枕石



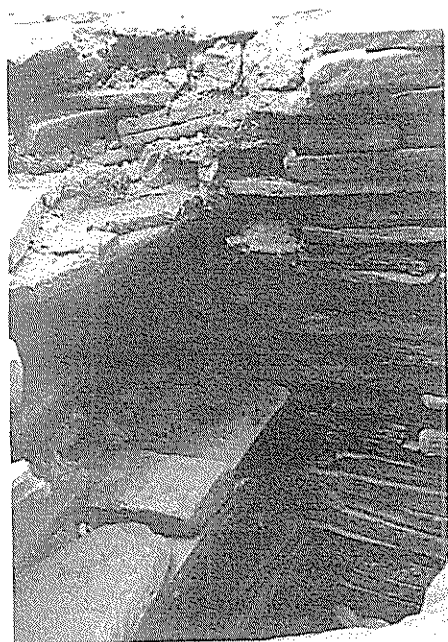
(2) 石室控積検出の枕石未製品



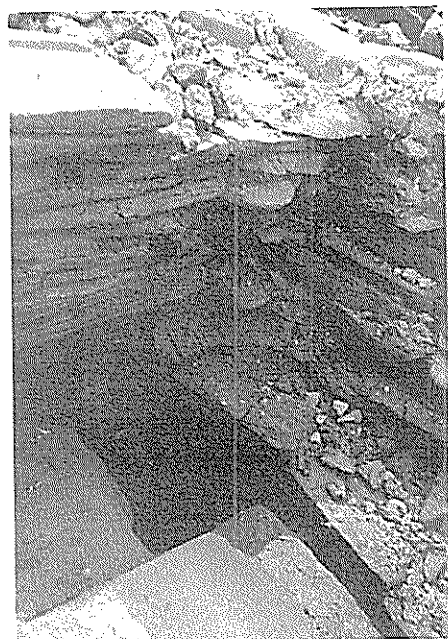
(1) 石室東側壁



(2) 石室北東隅側壁



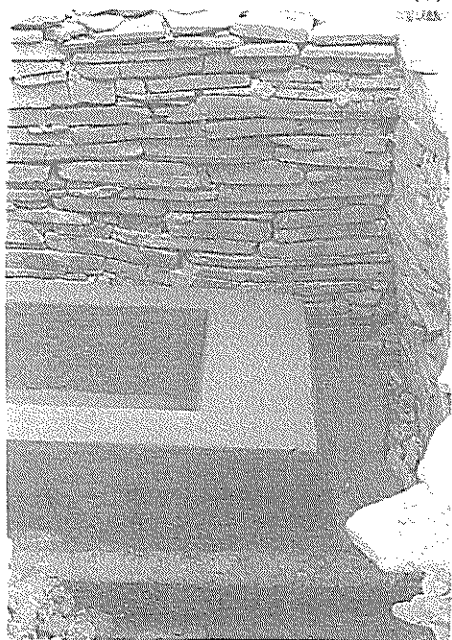
(3) 石室北西隅石積狀態



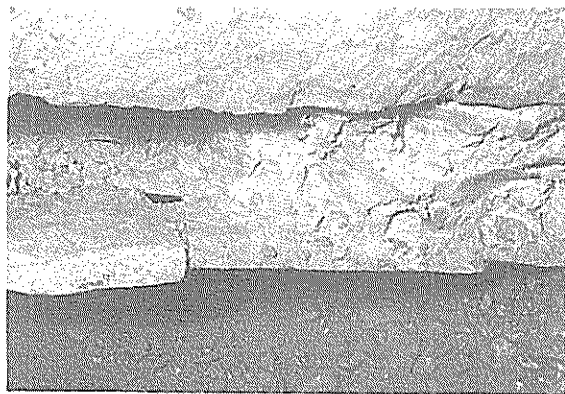
(4) 石室南西隅石積狀態



(1) 石棺南端部近影



(2) 棺身と石室側壁



(3) 石棺基底部と板石敷



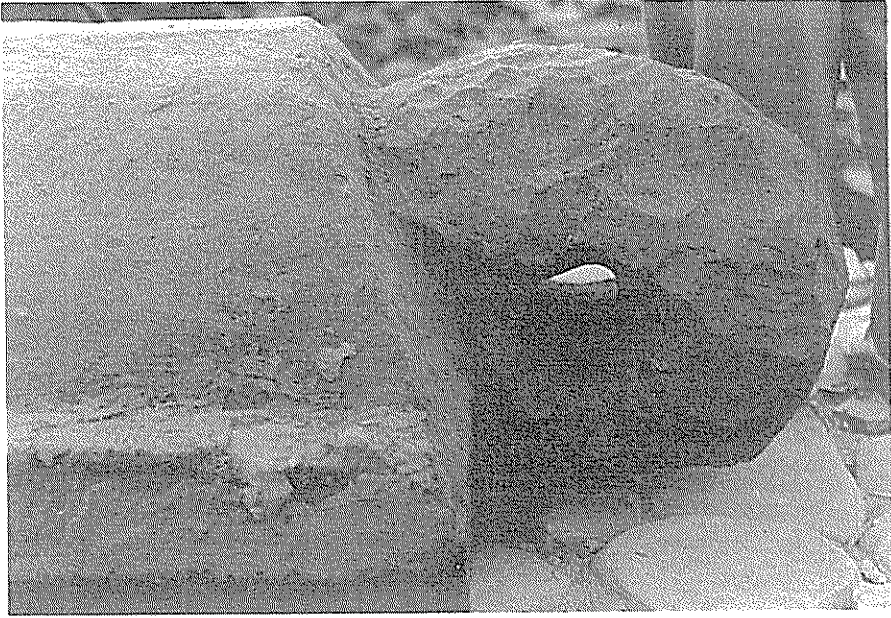


(1) 石棺盖石正面（北侧）



(2) 同上（南侧）

図版 17



(1) 石棺蓋石側面 (北側)



(2) 同上 (南側)



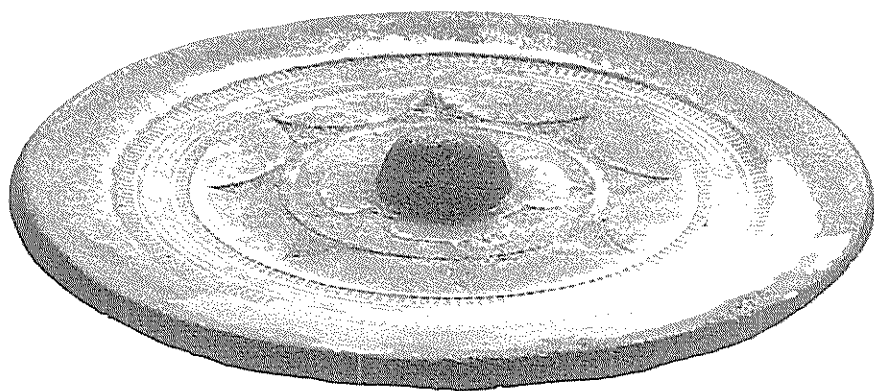
(1) 葺石・埴輪出土状態 (後円部東側)



(2) 葺石・埴輪出土状態 (後円部墳頂)



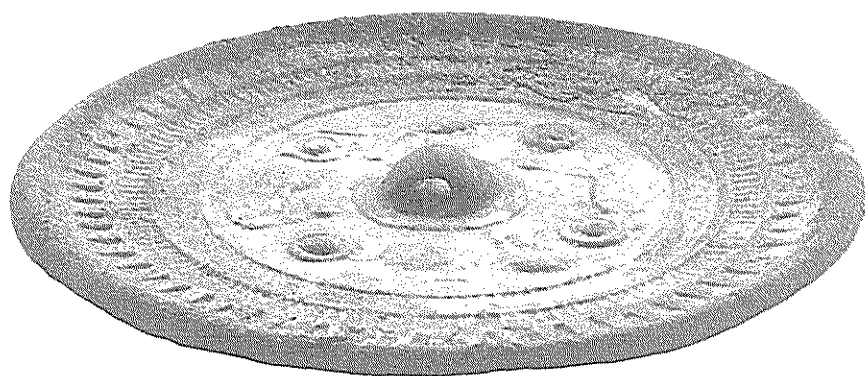
(3) 後円部南側、土師器 2 出土状態



(1) 内行花文鏡 径 17.1cm



(1) 方格規矩鏡 徑 18.4cm



(1) 鳥獸鏡 径11.3cm

図版 22



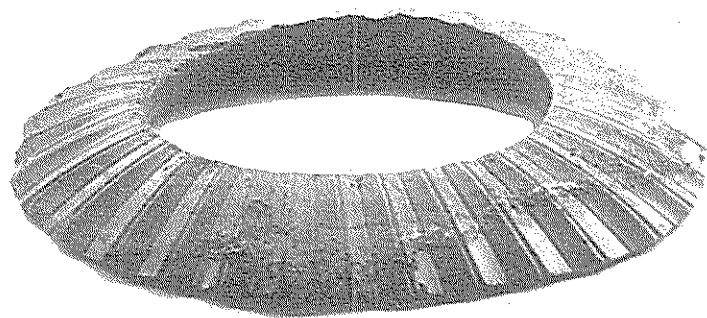
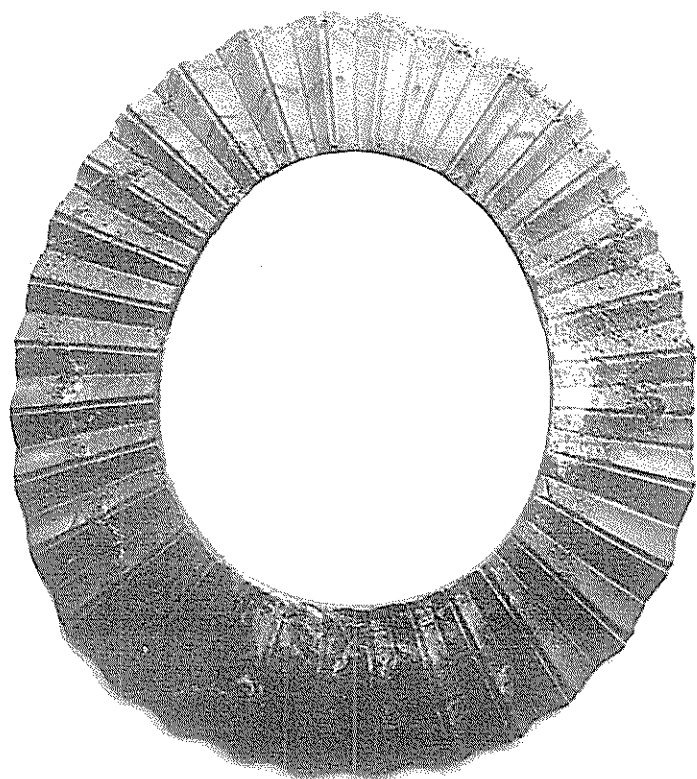
(1) 内行花文鏡鏡面 (出土時)



(2) 同左 (現在)



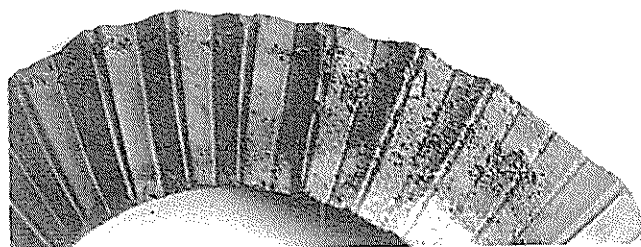
(3) 鳥獸鏡鏡面



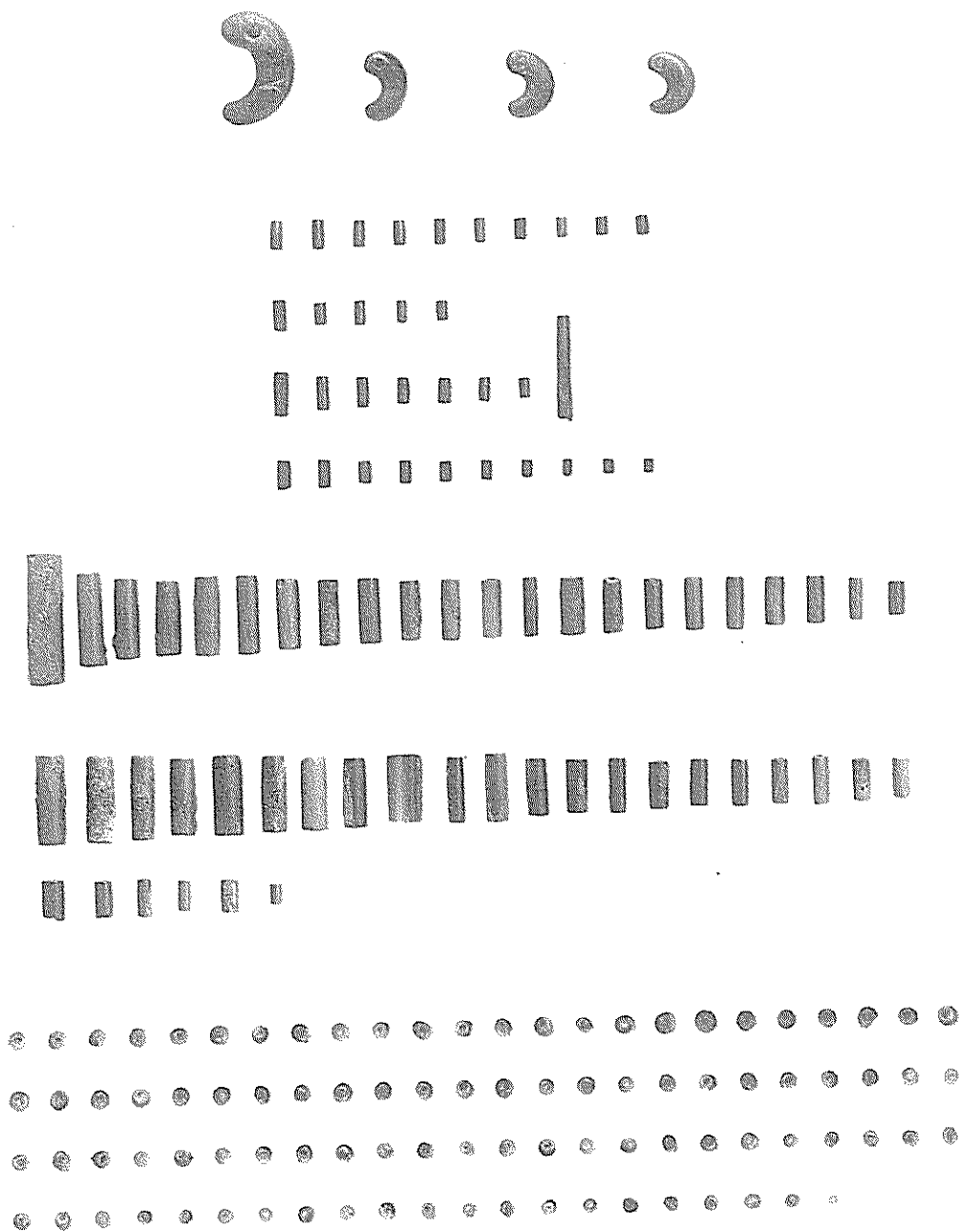
(1) 車輪石



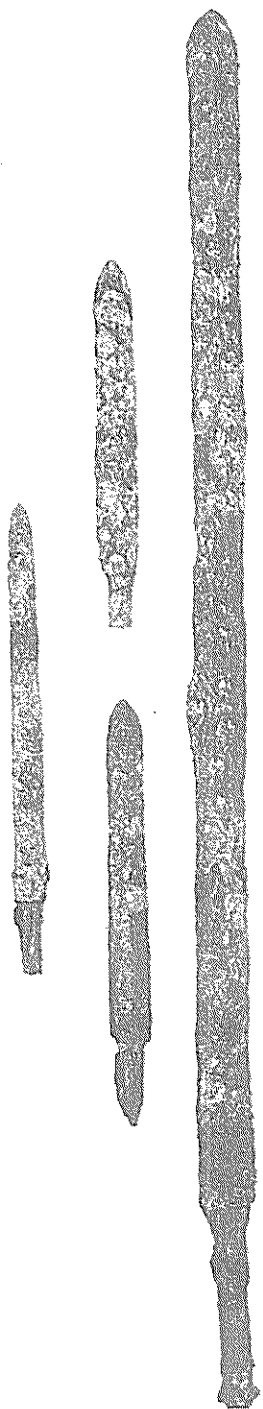
図版 24



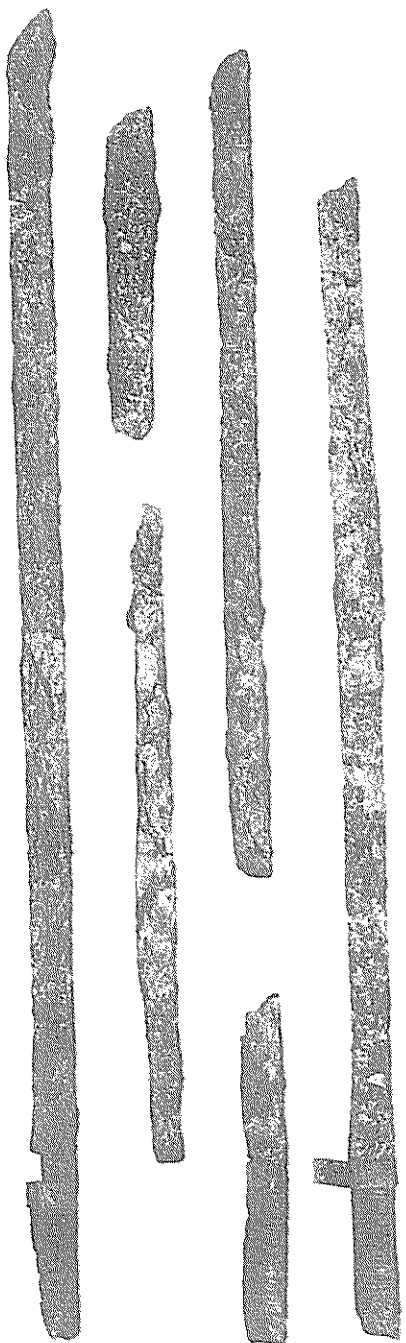
(1) 車輪石裏面 (上) (2) 車輪石部分 (下)



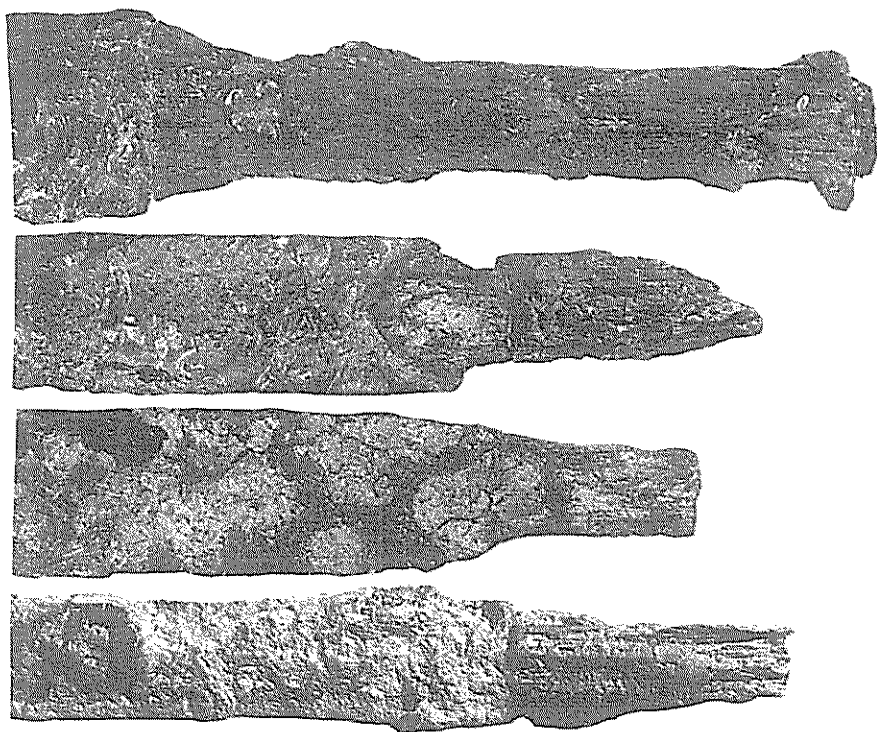
(1) 玉 類



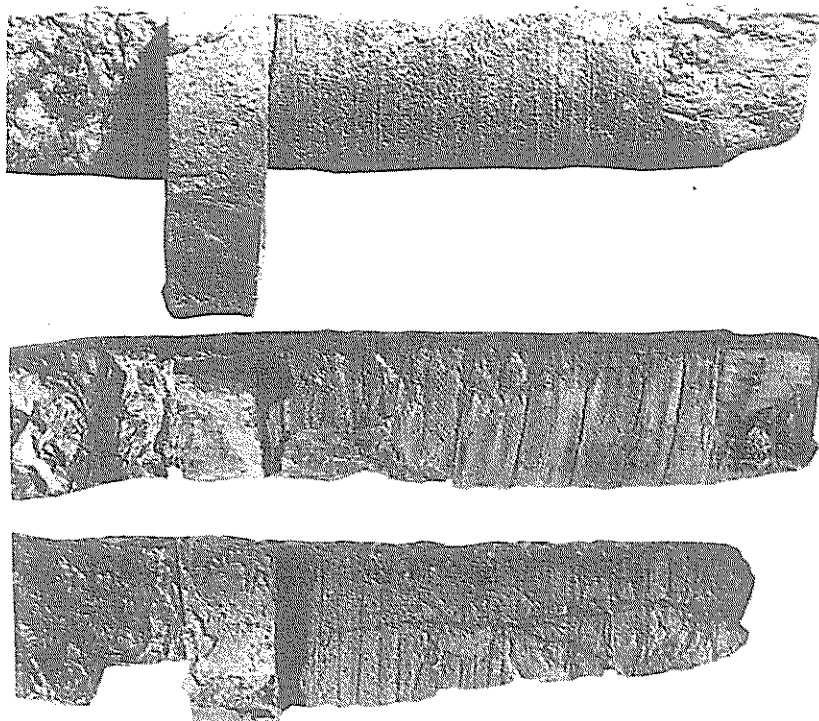
(1) 铁 剑



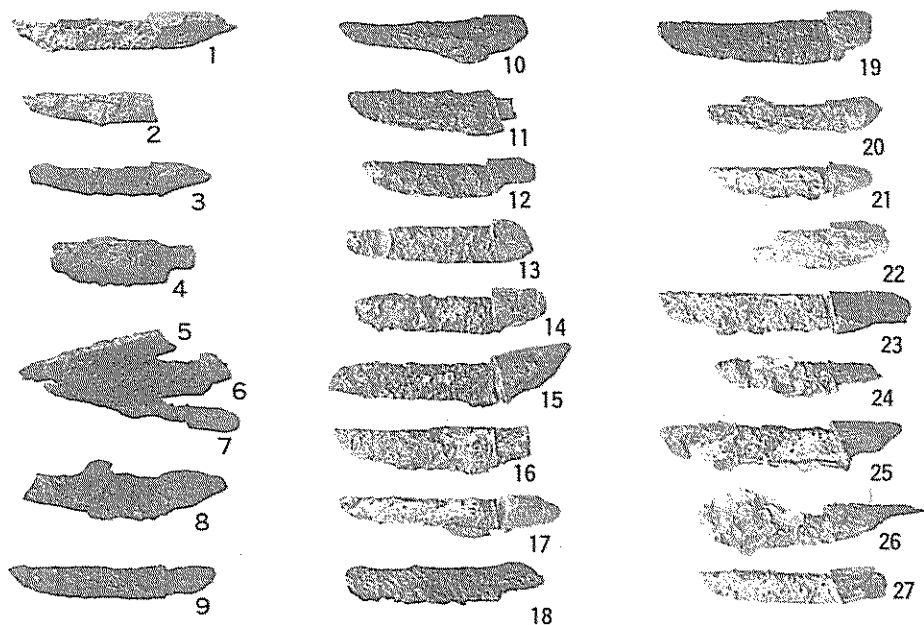
(2) 铁 刀



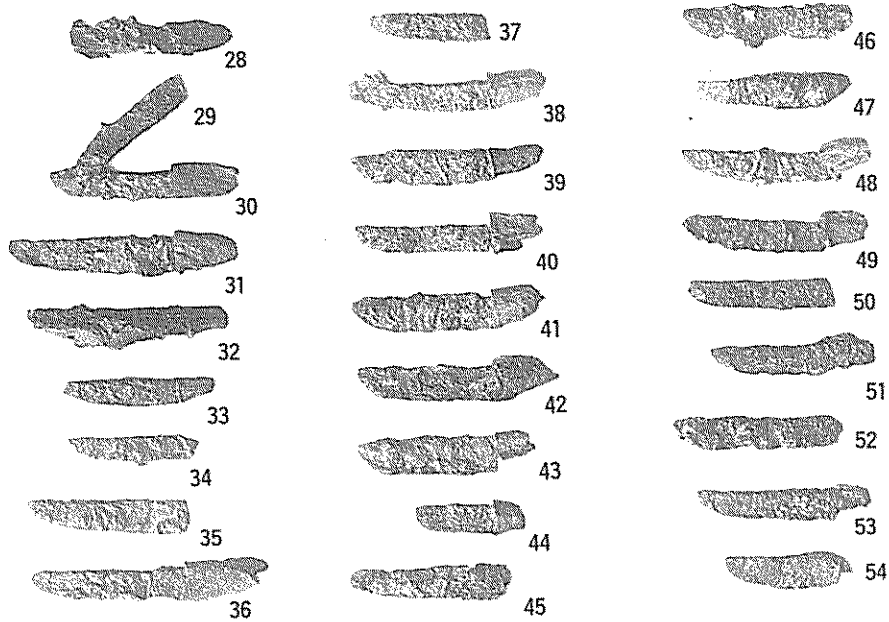
(1) 鉄剣柄部 (上から剣1、剣2、剣3、剣4)



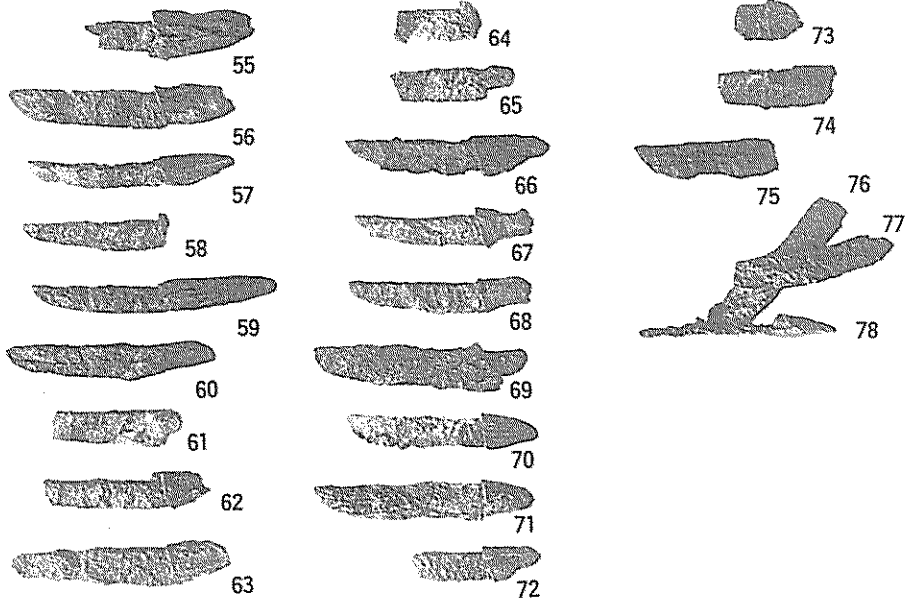
(2) 鉄刀柄部 (上から刀1、刀2、刀4)



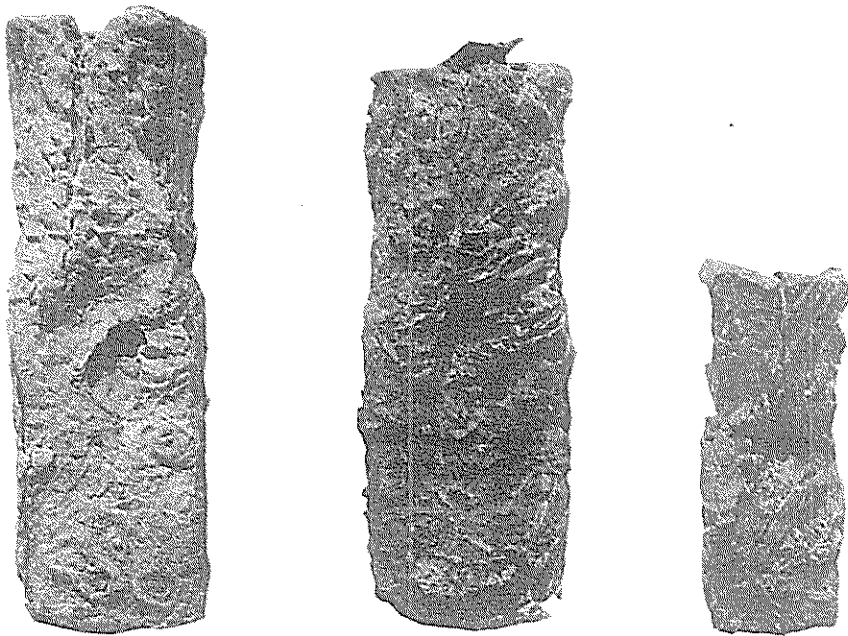
(1) 刀子 1



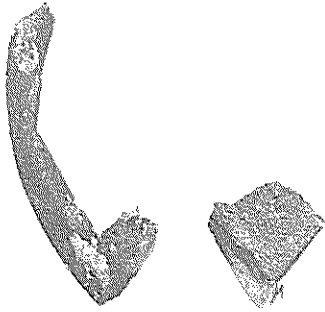
(2) 刀子 2



(1) 刀子 3



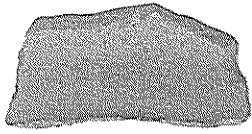
(2) 鉄 斧



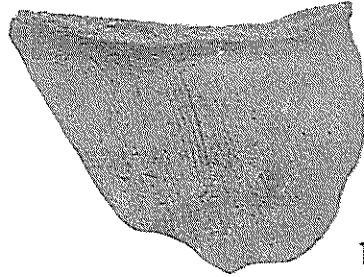
(1) 不明遺物



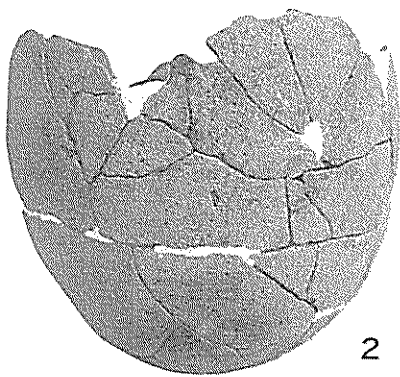
(2) 貝輪片



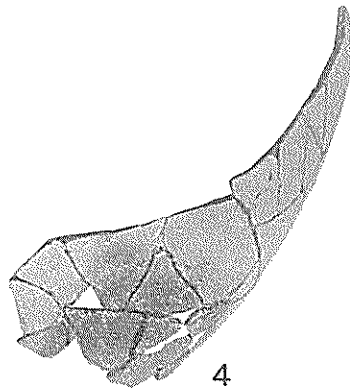
3



1

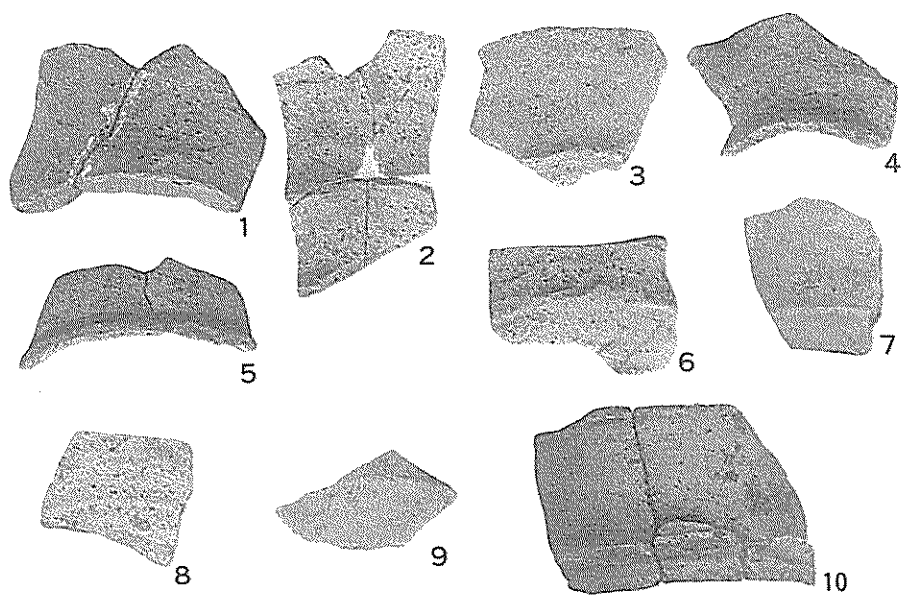


2

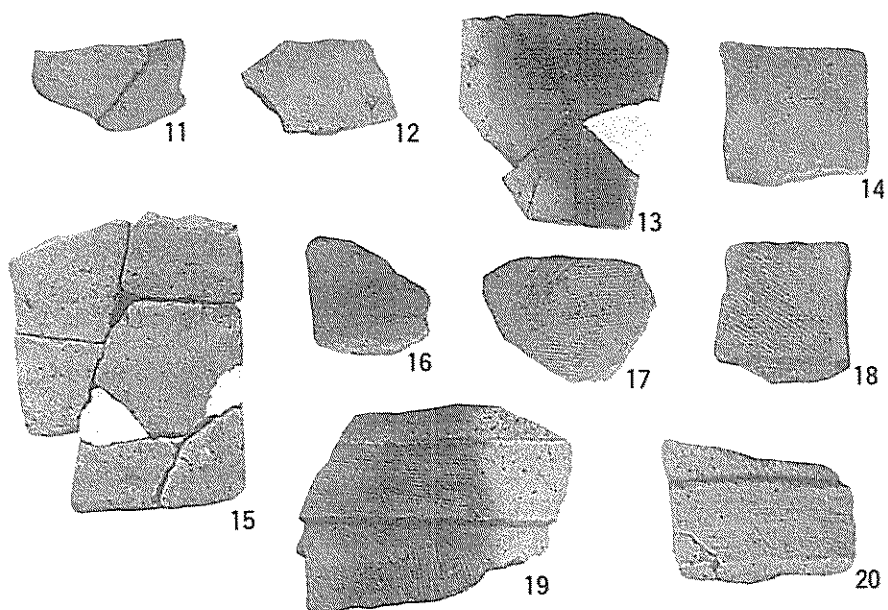


4

(3) 土師器

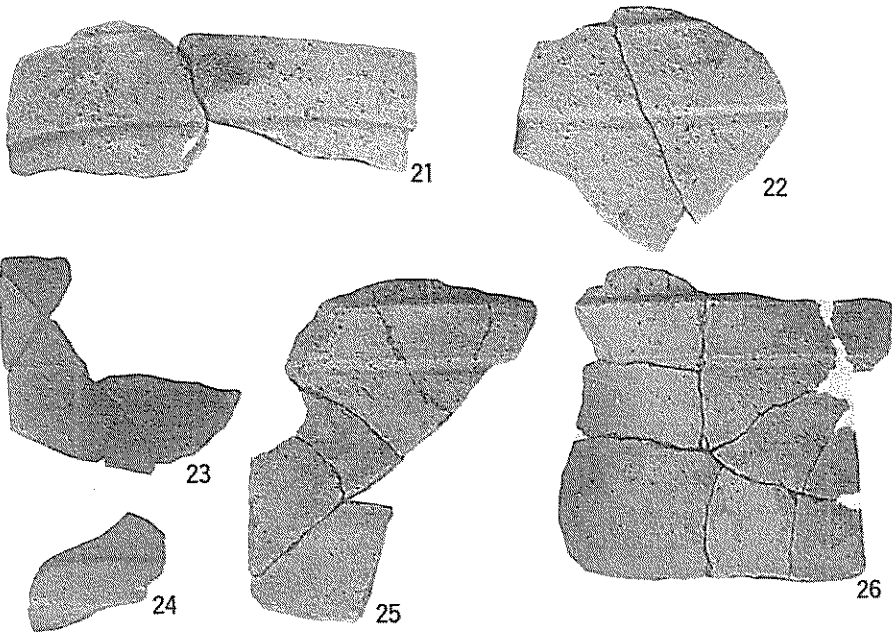


(1) 埴輪 1

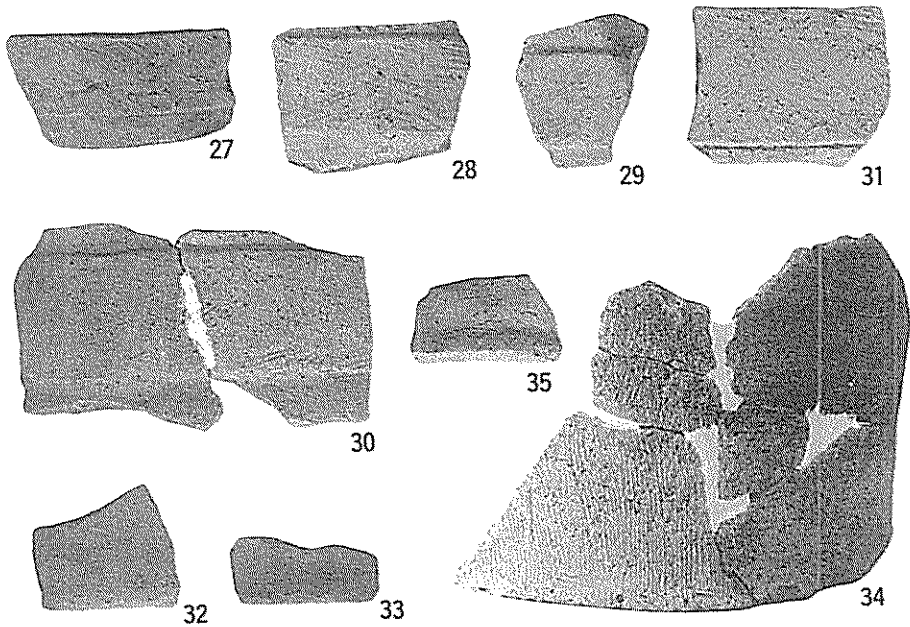


(2) 同上 2





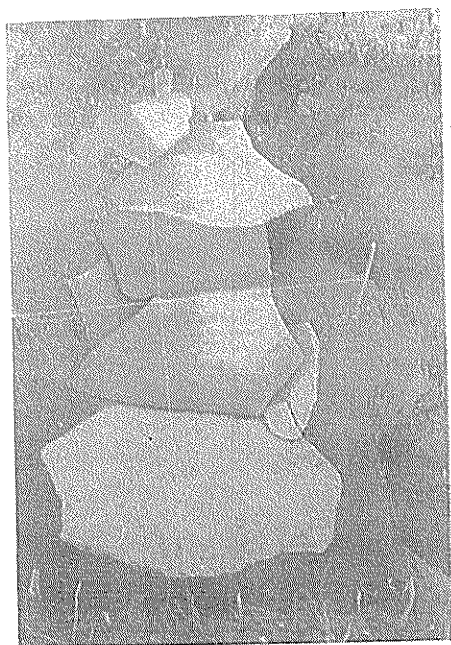
(1) 埴輪 3



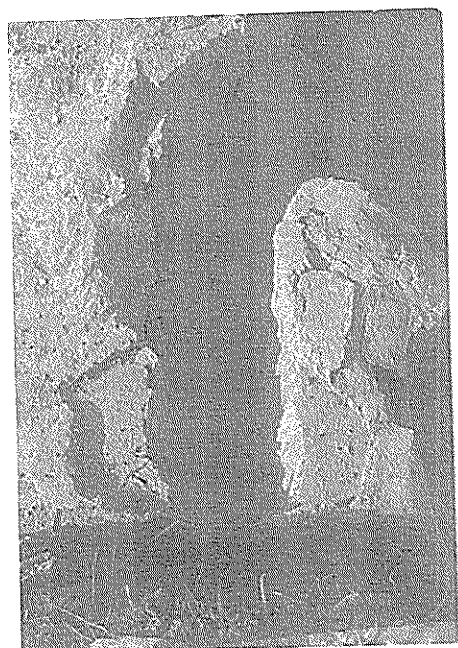
(2) 同上 4



(1) 石蓋土墳 (側面)



(2) 同 上 (平面)



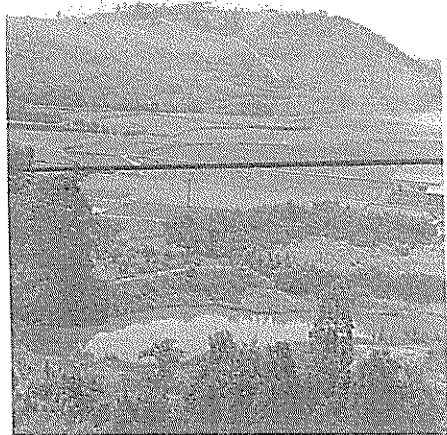
(3) 同 上 (蓋石除去後)



(1) 東南より古墳を望む



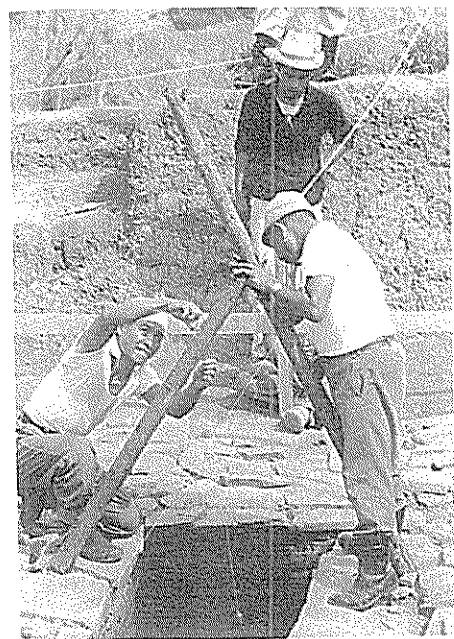
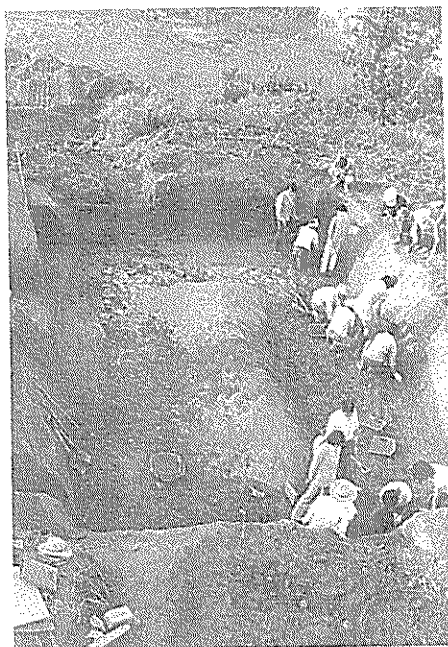
(2) 北側より後円部を望む (採土中)



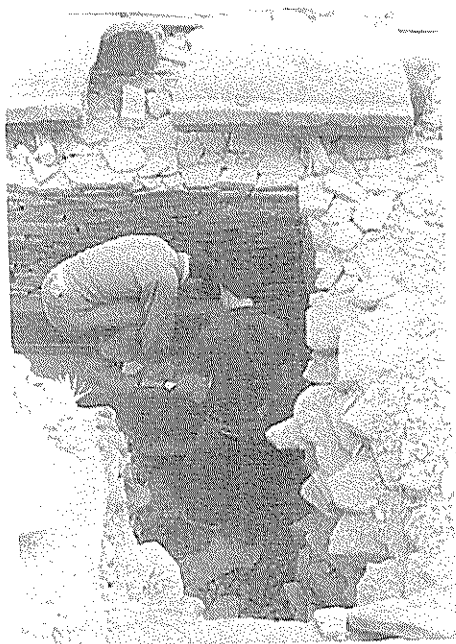
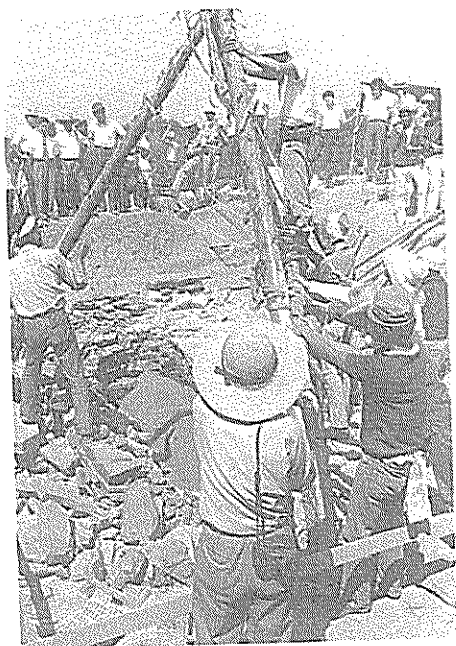
(3) 古墳より東南を望む



(4) 古墳より西北を望む



(1) 調査風景



(1) 調査風景